

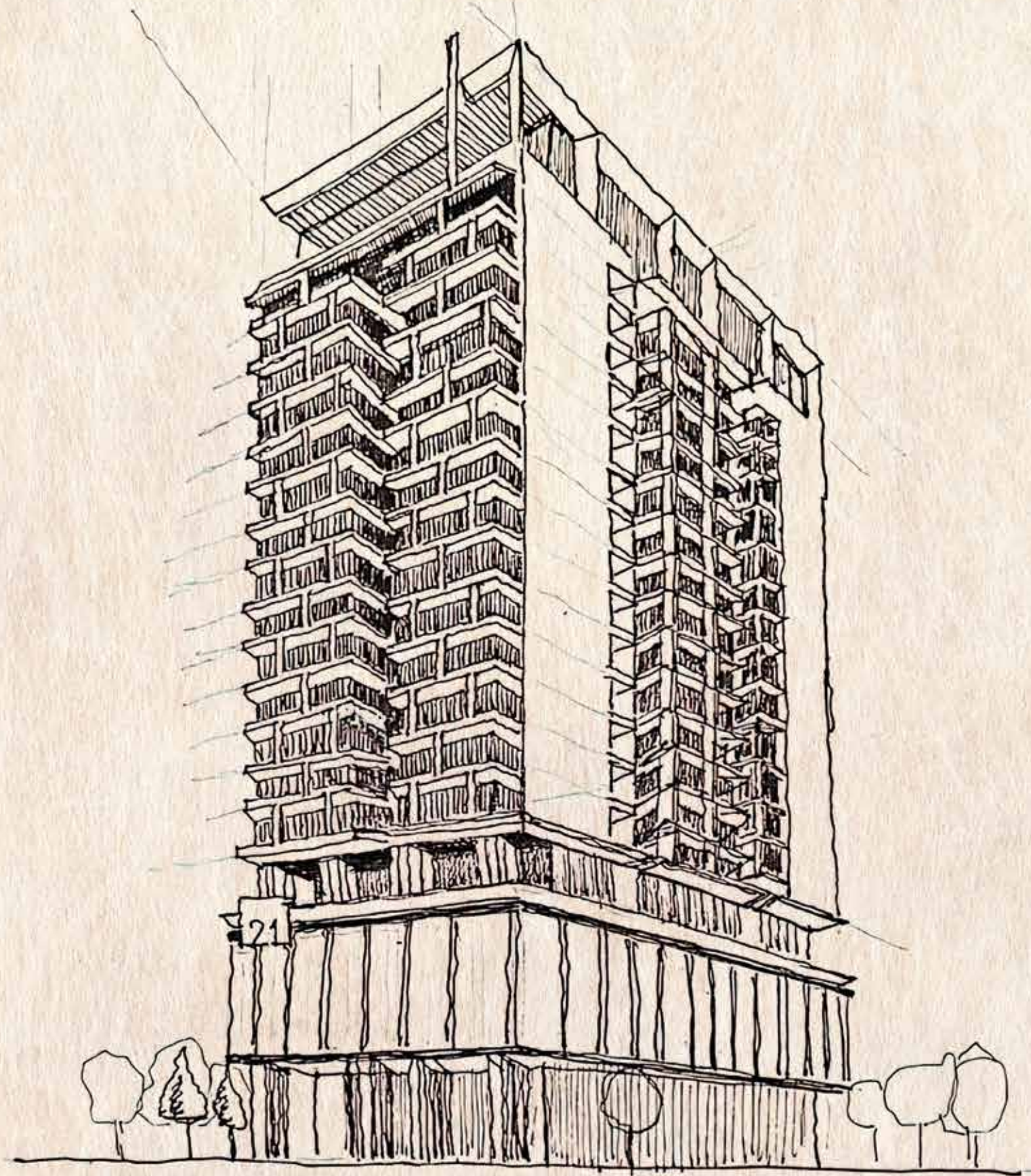


CITI HOUSING  
THE GOLD STANDARD LIVING



TOWER **21**





NASIR MEHMUD



CITI HOUSING  
THE GOLD STANDARD LIVING

PRESENTS

# TOWER **21**





# Citi Housing Introduction

Citi housing is one of Pakistan's largest real estate developer's with an impeccable track record of delivering successful projects across the country.



## ① Gujranwala

Citi Housing - Gujranwala, located along the banks of the Upper Chenab Canal, offers the actual notion of beautiful living in a gated community that combines aesthetics, convenience, and practicality.

## Sialkot ②

Citi Housing Sialkot is positioned strategically on Sialkot Road. It's modeled a picture-perfect, green, and serene lifestyle featuring every convenience of city life and the comfort of a suburban community.



## ③ Jhelum

Citi Housing is located in the heart of modern Jhelum. Planned and developed to precision, this gated community offers a flawlessly safe and plush lifestyle with a picturesque landscape.

## Faisalabad ④

Citi Housing Sargodha Road is exceeding all standards of excellence to carve out a spectacular lifestyle for our esteemed residents.

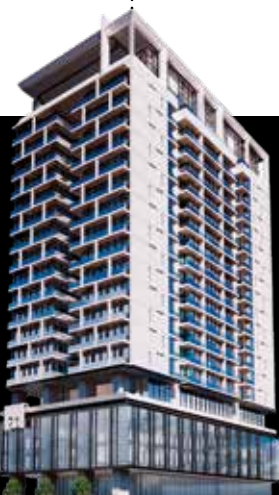


## ⑤ Multan

Citi Housing Multan is the 5th successor housing project of the company. After completion of previous projects, we are now setting a higher benchmark of gold standard living in Multan.

# Lahore

Being the pioneers of introducing Pakistan to an extravagant and Premium lifestyle, Citi Housing now presents the most Luxurious and Tallest Residential Tower of Lahore.



# TOWER 21



## TOWER 21

Inspired by minimalistic Japanese Architecture, the tower spreads across 21 residential floors and 3 dedicated parking floors, rising 300 feet above the ground. Designed by renowned architect Mr. Nasir Mehmud, this residential complex is nestled in the heart of Lahore.





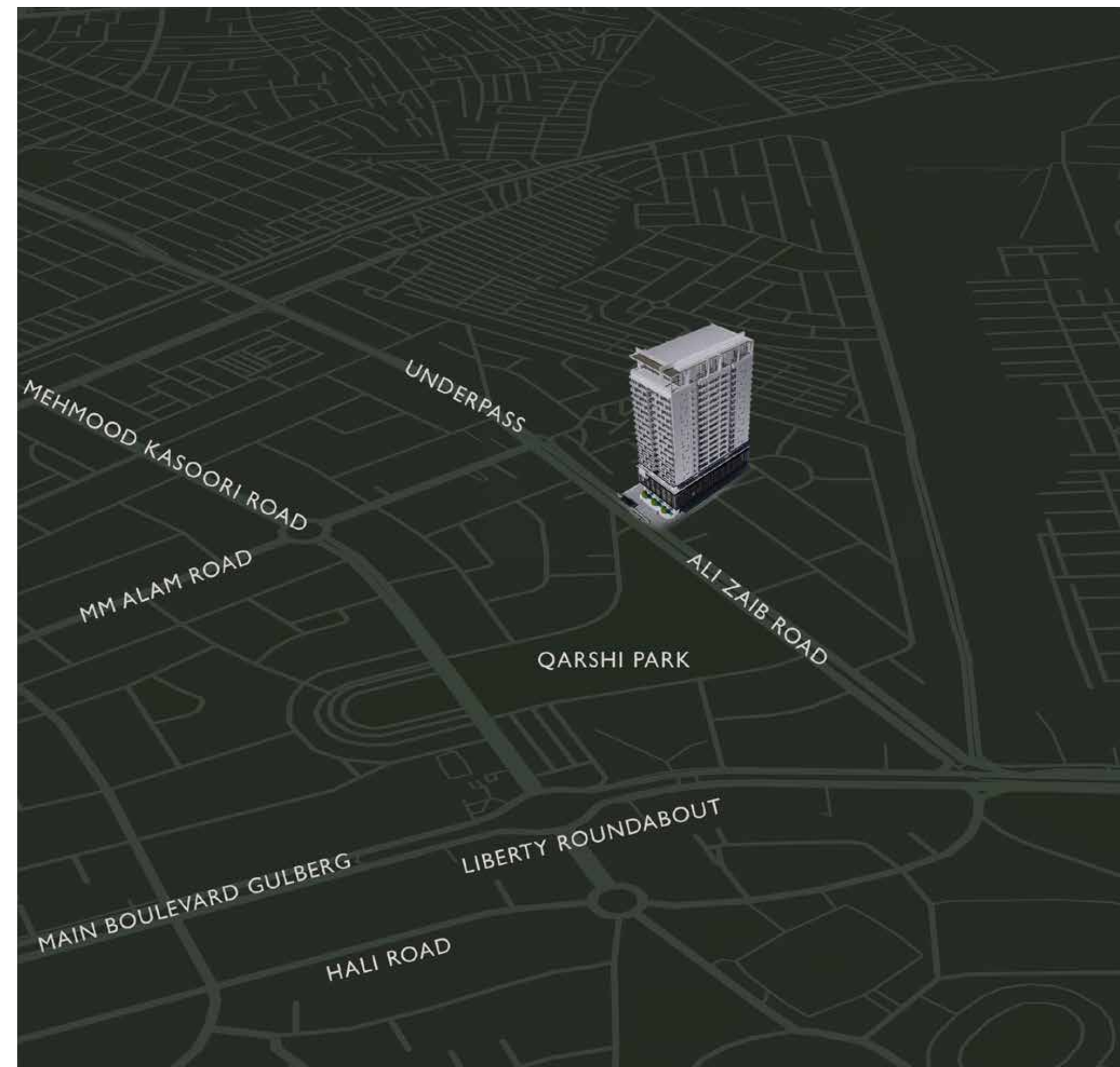
## Design Philosophy

An amalgamation of natural materials and state-of-the-art technology, Tower 21 presents minimalistic and sublime designs.

## Building Dreams

Wrap-around balconies on each residence. All the residences in Tower 21 feature one of the most breathtaking panoramic views.





## Close to everything you need

Strategically located in the most prestigious location of Gulberg 3, Lahore. Tower 21 is the address to live in.



A minute away  
from MM Alam Road



3 minutes drive from  
Main Boulevard Gulberg



5 minutes drive  
from Liberty Market



7 minutes drive from  
Defense Housing Authority





## Discover the luxury within

Designed to resemble the inside of a traditional Shoji paper lantern, the Lobby of Tower 21 is a vast garden and bar lounge where the beauty of nature meets the elegance of Japanese design.



An oasis of calm and serenity nestled in the heart of Lahore





## The Club Floor

Drawing on the Japanese understanding of nature and balance, Tower 21's Health Floor features multiple treatment rooms, including hot baths, steam rooms, etc.

More so, it boasts of an infinity pool with panoramic city views, a well-equipped fitness center comprising cardiovascular and weight training equipment by well-reputed Technogym as well as a dedicated yoga and Pilates studio.





## An endlessly flowing infinity pool and health bar to go with

State-of-the-art infinity pool, 80 feet above the ground. Dive in and enjoy the panoramic views of the city. A soothing and revitalizing experience awaits you at our poolside.



Infinity Pool

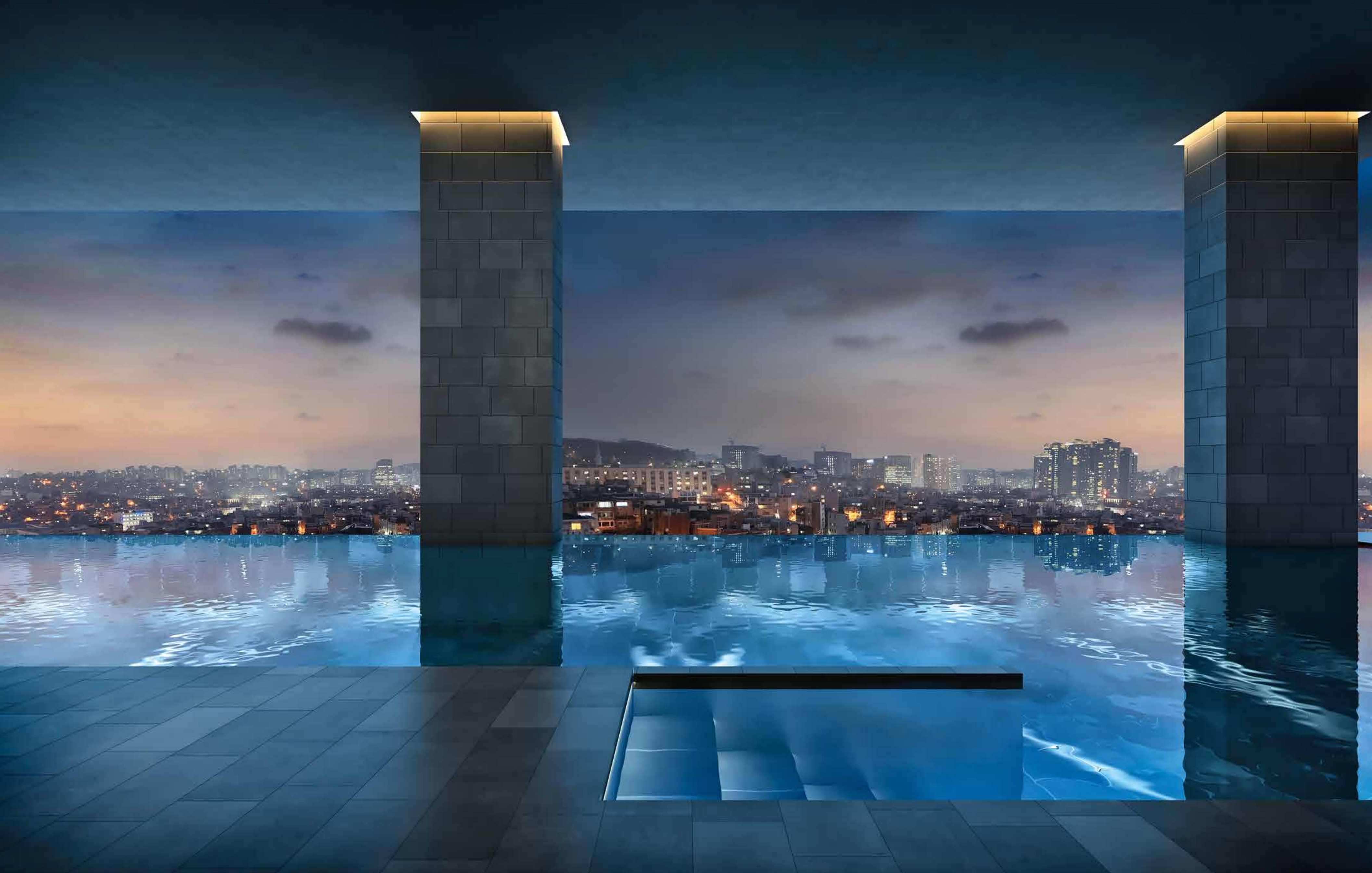


Health Bar



360 View









## Gymnasium

Spanning across 2 floors, covering 7,500 sq ft; the gym is well-resourced with cutting-edge Technogym equipment.

Featuring well-designed space, floor-to-ceiling windows with an uninterrupted sky-scraper view of the city.











## Spa; Unwind and Relax

Escape to tranquillity at Bonsai spa with multiple treatment rooms spread across two floors on 5000 sqft.





## Business Centre

For those looking for a quiet place away from their homes, our business centre offers:

- Meeting room
- Computer access
- Coffee station
- In-house Wi-Fi



## Restaurant

A members-only fine dining restaurant which offers you an exclusive experience, allowing you to celebrate the finer moments of your life.



# TOWĒR 21

3 Bedroom Residence





## Bedroom View

These spacious minimalistic residencies are the definition of style and class. The room abounds in neutral tones that accentuate with sublime detailing and ambient lighting.

Revel in the panoramic views of the city-scape through our vast terraces and floor-to-ceiling windows.











## Dining View

- Private elevator
- Entrance foyer
- Balcony
- Moveable glass partition





















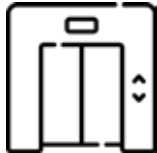
# 3 Bedroom Residence

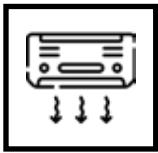
AREA: 2814 sq.ft


3 Bedrooms, 3 Bathrooms, Lounge, Dining, Powder Room, Maid Room, Laundry, Main kitchen, Service kitchen.





## Apartment Features

- 

Private Elevator Access
- 

Concealed HVAC System
- 

Noise and weather insulated windows
- 

Walk-in Closets
- 

Separate Laundry





# TOWĒR 21

2 Bedroom Residence





## Bedroom View

Generously spacious, warm and minimal in design, Tower 21 bedrooms are furnished with natural textures and timeless simplicity, overlooking the sprawling cityscape through floor-to-ceiling windows.











## Dining View

- Private elevator
- Entrance foyer
- Corner wrap-around balconies













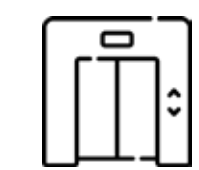
# 2 Bedroom Residence

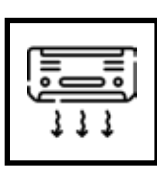
AREA: 2153 sq.ft


2 Bedrooms, 2 Bathrooms, Lounge, Dining, Powder Room, Maid Room, Laundry, Main Kitchen, Service Kitchen.




## Apartment Features

- 

Private Elevator Access
- 

Concealed HVAC System
- 

Noise and weather insulated windows
- 

Corner Balconies





# TOWĒR 21

1 Bedroom Residence



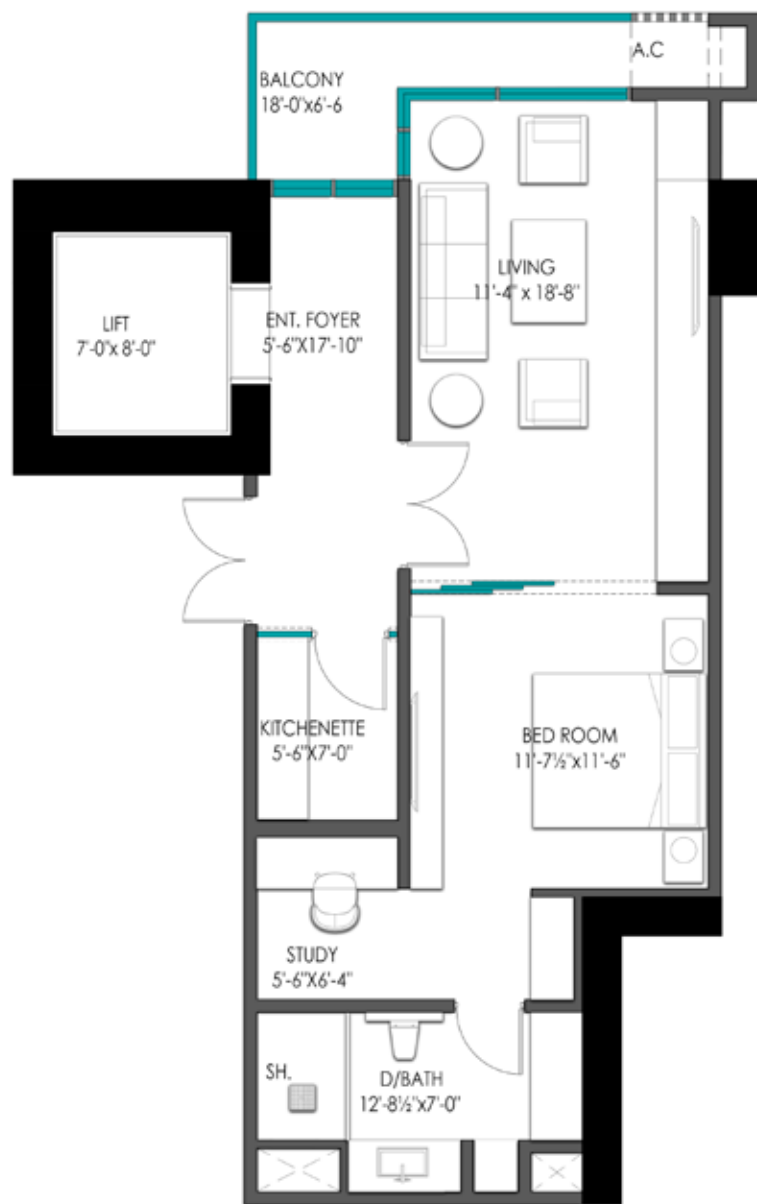




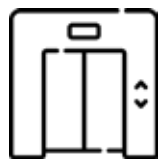
# 1 Bedroom Residence

AREA: 771 sq.ft

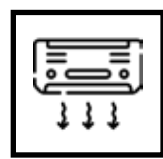
1 Bedroom, 1 Bathroom, Lounge, Living Room, Kitchenette, Study Room.



## Apartment Features



Private Elevator  
Access



Concealed HVAC  
System



Noise and weather  
insulated windows



Corner Balconies





# TOWER 21

## Key Features

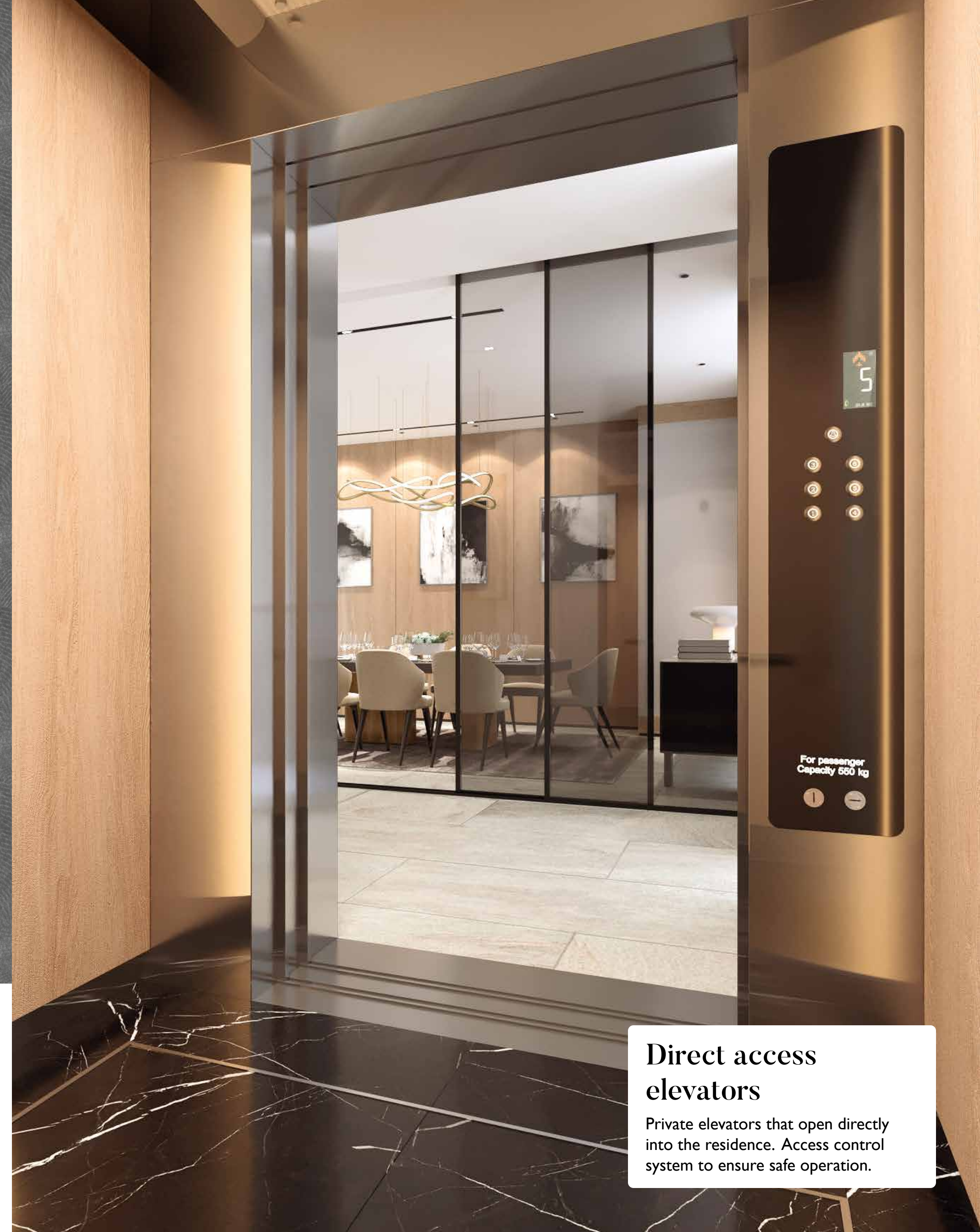
- Double height entrance lobby
- 24/7 concierge service
- Private direct access elevators
- Double height club floor
- Members-only restaurant
- Business centre
- Children's play area
- Fully equipped Gymnasium
- Infinity pool
- Spa
- Health bar
- Valet service
- Dedicated cargo and service lift
- 24/7 electricity back-up
- Building management
- Garbage chute/ Waste management system on every floor
- BOH entrance in all residences
- Stackable mechanical parking
- Electric car charging provisions in all parking spaces
- Drivers Lounge
- Dedicated car wash for residents



LDA Approved



FBR Approved  
(Income source declaration not required)



### Direct access elevators

Private elevators that open directly into the residence. Access control system to ensure safe operation.





## Well designed parking area

The parking area spreads over 3 basement floors with designated parking bays and electric car charging provisions. A dedicated in-house car wash facility is also available to the residents.





## Stackable Mechanical Parking

Stackable mechanical parking is also available for long-term storage of cars which will be managed by the building, along with a chauffeurs lounge in the basement.

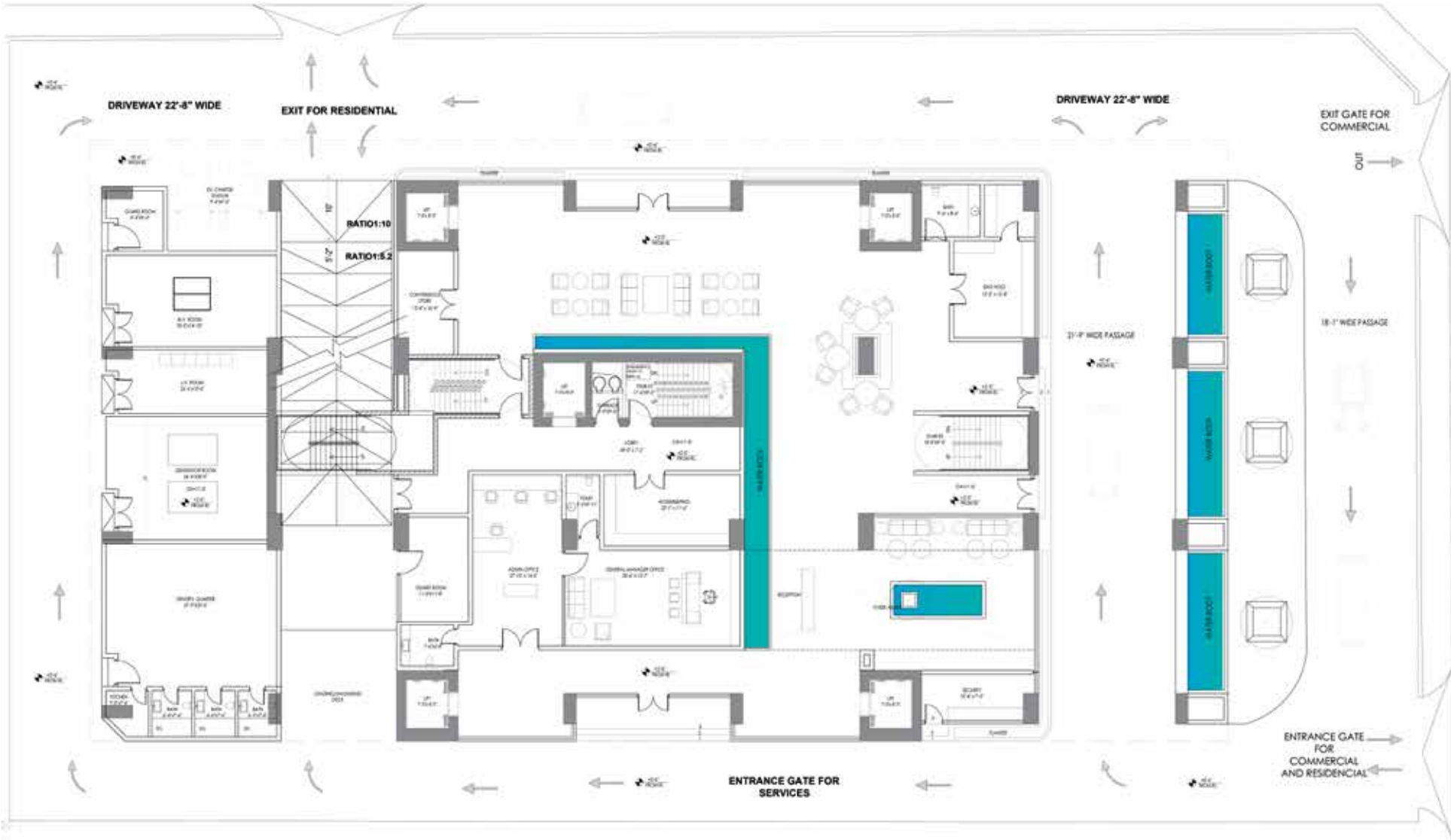


# TOWER 21

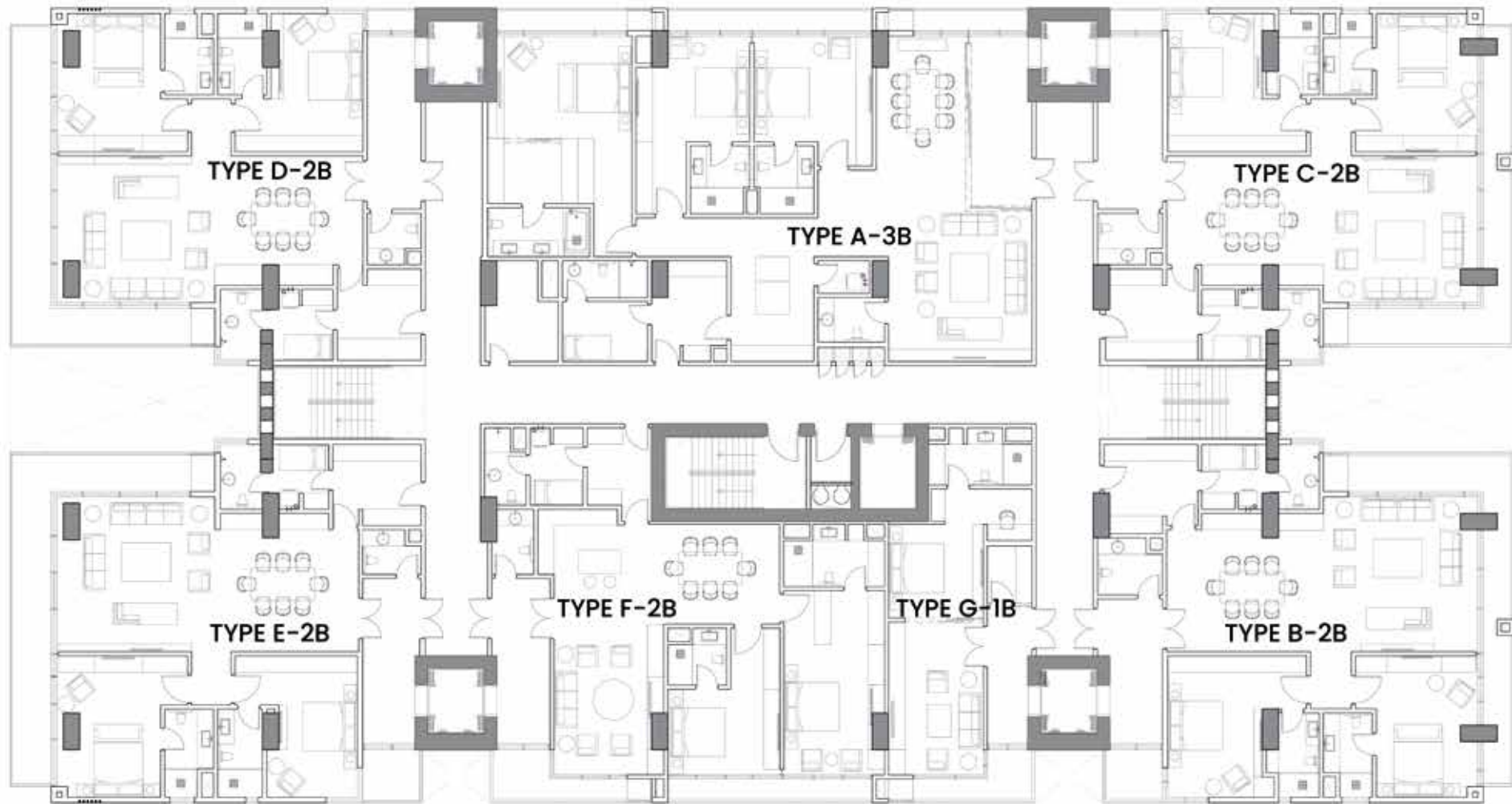
Floor Plans



# Ground Floor Plan



## Typical Floor Plan



# Typical 3 Bedroom Floor Plan

## TYPE A



No.	Suite Area (SFT)	Balcony (SFT)	Net Area (SFT)
A-3B	2634	180	2814



# Typical 2 Bedroom Floor Plan

TYPE B



No.	Suite Area (SFT)	Balcony (SFT)	Net Area (SFT)
B-2B	1928	295	2223

# Typical 2 Bedroom Floor Plan

TYPE C



No.	Suite Area (SFT)	Balcony (SFT)	Net Area (SFT)
C-2B	1912	260	2172



# Typical 2 Bedroom Floor Plan

TYPE D



No.	Suite Area (SFT)	Balcony (SFT)	Net Area (SFT)
D-2B	1843	310	2153

# Typical 2 Bedroom Floor Plan

TYPE E



No.	Suite Area (SFT)	Balcony (SFT)	Net Area (SFT)
E-2B	1860	345	2205



# Typical 2 Bedroom Floor Plan

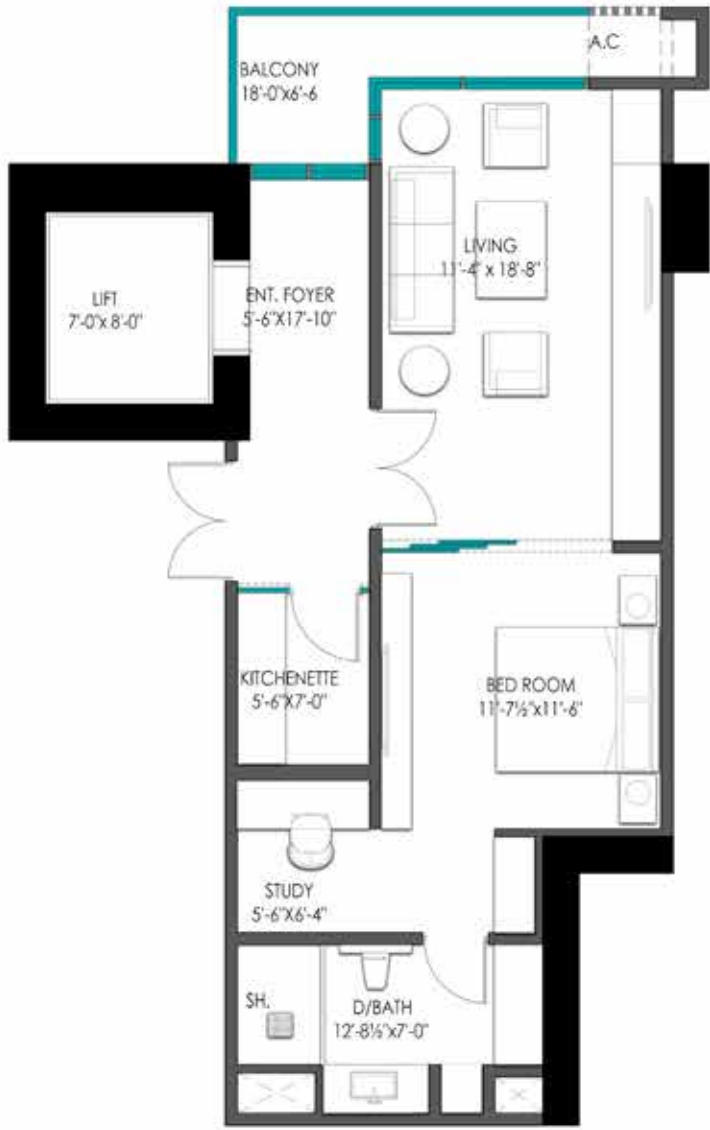
TYPE F



No.	Suite Area (SFT)	Balcony (SFT)	Net Area (SFT)
F-2B	1756	168	1924

# Typical 1 Bedroom Floor Plan

TYPE G



No.	Suite Area (SFT)	Balcony (SFT)	Net Area (SFT)
G-1B	706	74	780





DESIGNED BY ARCHITECT

# Nasir Mahmud

ARCHITECT | LEADER | THINKER | MOTIVATOR | BOHEMIAN FREE SPIRIT | CERTIFIED GOLF NUT

Nasir Mahmud is a man devoted to art, humanity, and intelligent design. He was the first intuitive step when we set out to turn our passion into reality. He is a legend in the world of architecture, noted for his unconditional and innovative approach to design. His designs are futuristic, daring, artistic and uncompromisingly sustainable. He is known for his out-of-the-box thinking and approach to not just the design but the lifecycle of the project. We are consistently in awe of his unique use of organic and natural materials that almost defy logic in how they synergize and work together, and yet he manages to make them one with nature through his innovative detailing. He was the right choice, in fact, the only choice to execute our ambitions to touch the sky.



